

Applications

- Reduce the cost of nozzle.
- Reduce human resource.
- Reduce the products reject.
- Improve SMT production efficiency.
- For all types of SMT general nozzles (SONY, FUJI, YAMAHA, SIEMENS, PANASONIC JUKI etc., special nozzles need customized holder)



TNW-1202

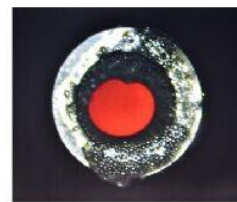
Features

- Nozzle are easy to remove and place
- Touch screen achieves all setting, easy to operate and maintain
- DI water is not harmful for all kinds of material nozzles and holders
- Liquid level will display in LED screen, easy to observe. Lower liquid level will give out an alarm.

Specifications

Dimension	W460 *D350*H335 mm
Air compression	0.5~0.7Mpa
Water consumption	< 100cc/Hour
Stations	Y: 2; X: 12; total: 24
Sprayer	2pcs
Cleaning ability	Max 24pcs
Cleaning time	15 sec/station
Power	AC85-240V
Weight	About 40KG

Before



After

